

XML and Databases

Chapter 3: Designing XML DTDs

Prof. Dr. Stefan Brass

Martin-Luther-Universität Halle-Wittenberg

Winter 2019/20

<http://www.informatik.uni-halle.de/~brass/xml19/>

Objectives

After completing this chapter, you should be able to:

- develop an XML DTD for a given application.
- translate a given Entity-Relationship-Diagram or relational database schema into an XML DTD.
 - E.g. the exam might contain a small relational database with a few tables, and your task is to construct a DTD for representing the information in the given database. In addition, you might have to write an example XML data file with the shown data that can be validated with respect to your DTD.
- discuss alternative solutions.
- discuss restrictions of the DTD formalism that complicate a direct translation of relational schemas.

Inhalt

- 1 Motivation, Example Database
- 2 Single Rows/Objects
- 3 Grouping Rows: Tables
- 4 Relationships

Motivation (1)

- In order to use XML, one must specify the document/data file structure.
- This specification does not necessarily have to be in the form of a DTD, but DTDs are simple and there are many tools that work with DTDs.

DTDs were inherited from SGML, and are more intended for documents. Databases have other restrictions that cannot be expressed in DTDs, therefore XML documents might be valid with respect to the specified DTD that do not correspond to a legal database state. XML Schema was developed as an alternative to DTDs that fulfills better the special needs of databases.

Motivation (2)

- Often, XML is used as an exchange format between databases. Then it is clear that one must find an XML structure that corresponds to the given DB.
- There are a lot of methods, tools, and theory for developing database schemas.
- Therefore, even if one does not (yet) store the data in a database, it makes sense to develop first a DB schema in order to design an XML data structure.

If XML is used as a poor man's database, and not for "real" documents which typically have a less stringent structure.

Example Database (1)

STUDENTS			
<u>SID</u>	FIRST	LAST	EMAIL
101	Ann	Smith	...
102	David	Jones	NULL
103	Paul	Miller	...
104	Maria	Brown	...

EXERCISES			
<u>CAT</u>	<u>ENO</u>	TOPIC	MAXPT
H	1	ER	10
H	2	SQL	10
M	1	SQL	14

RESULTS			
<u>SID</u>	<u>CAT</u>	<u>ENO</u>	POINTS
101	H	1	10
101	H	2	8
101	M	1	12
102	H	1	9
102	H	2	9
102	M	1	10
103	H	1	5
103	M	1	7

Example Database (2)

- **STUDENTS**: one row for each student in the course.
 - **SID**: “Student ID” (unique number).
 - **FIRST**, **LAST**: First and last name.
 - **EMAIL**: Email address (can be null).
- **EXERCISES**: one row for each exercise.
 - **CAT**: Exercise category.

E.g. **'H'**: homework, **'M'**: midterm exam, **'F'**: final exam.
 - **ENO**: Exercise number (within category).
 - **TOPIC**: Topic of the exercise.
 - **MAXPT**: Max. no. of points (How many points is it worth?).

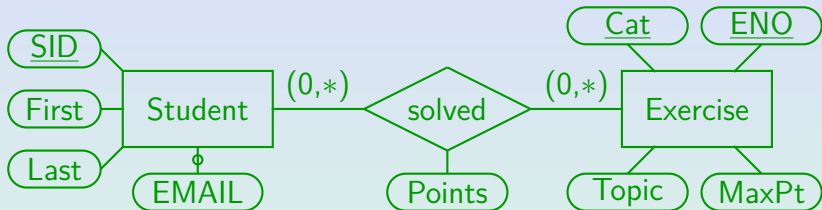
Example Database (3)

- **RESULTS**: one row for each submitted solution to an exercise.
 - **SID**: Student who wrote the solution.

This references a row in **STUDENTS**.
 - **CAT, ENO**: Identification of the exercise.

Together, this uniquely identifies a row in **EXERCISES**.
 - **POINTS**: Number of points the student got for the squeezesolution.
 - A missing row means that the student did not yet hand in a solution to the exercise.

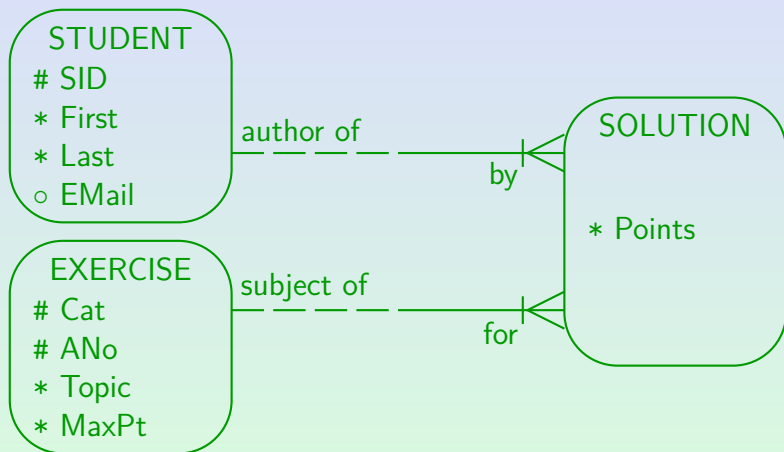
Example Database (4)



- This is an equivalent schema in the ER-Model.

ER = Entity-Relationship. Entities are another name for objects (object types / classes are shown as boxes in the ER-diagram). Relationships between objects (object types) are shown as diamonds. Attributes are pieces of data that are stored about objects or relationships (shown as ovals). Optional attributes are marked with a circle. Key attributes (which uniquely identify objects) are underlined.

Example Database (5)



The same ER-Schema in Barker Notation. Primary key attributes are marked with #. Attributes that might be null are marked with o. Since the original Barker notation had no attributes of relationships, an association entity "Solution" is needed. See also Slide 32.

Inhalt

- 1 Motivation, Example Database
- 2 Single Rows/Objects**
- 3 Grouping Rows: Tables
- 4 Relationships

Table Rows/Objects: Method I

- A simple and natural way to encode relational data is to use one empty element per table row:

```
<STUDENT SID='101' FIRST='Ann' LAST='Smith'  
        EMAIL='smith@acm.org' />
```

- This could be declared as follows:

```
<!ELEMENT STUDENT EMPTY>  
<!ATTLIST STUDENT SID    CDATA #REQUIRED  
                FIRST CDATA #REQUIRED  
                LAST   CDATA #REQUIRED  
                EMAIL CDATA #IMPLIED>
```

- See next slide for the data type of `SID`.

Data Types, Keys (1)

- XML has no type for numbers (SGML had **NUMBER**). The nearest one could get to numbers in XML DTDs is the type **NMTOKEN**.

Sequences of digits, letters and a few special characters (-, _, :, .).
E.g. "10.5kg" is an NMTOKEN value. Spaces are not permitted.

- If references to students are needed (see below), **ID** might be the right type for the attribute **SID**.

This is supported in SGML and XML.

- But note that ID-values must start with a letter.

Or "_" or ":". Thus, the data values have to be changed, e.g. "S101" instead of "101".

Data Types, Keys (2)

- Note also that **ID**-values must be globally unique in an XML document.

In contrast, key values have to be unique only within a relation (corresponding to an element type in this translation).

- Finally, composed keys (e.g., **CAT** and **ENO**) cannot be directly translated to **ID**-attributes.

In the example, one could concatenate the two attributes, this would also solve the problem that **ID**-values must start with a letter: E.g., H1, H2, M1. The problem with this is that it is now more difficult to access category and exercise number separately.

- It might be good to choose the attribute name **ID** instead of **SID** (to make the purpose clear even without DTD).

Data Types, Keys (3)

- These problems to represent data types in XML has led to the XML Schema proposal.

Specifications in XML Schema are an alternative to DTDs. XML Schema permits basically all that is possible in classical databases (and more), but it is much more complicated than DTDs. Whereas DTDs use a different syntax than the XML data syntax, XML Schema specifications are valid XML documents. Unfortunately, this also means that XML Schema specifications are significantly longer than the corresponding DTD.

- When the XML data are only an export from a database, and not directly modified, it is unnecessary to specify all constraints also for the XML file.

They are automatically satisfied.

Data Types, Keys (4)

- The most common XML data types for attributes are **CDATA** (strings), **ID** (unique identifiers), **NMTOKEN** (words/codes), and enumeration types.
- E.g., if it is clear that the only possible exercise categories are homeworks, midterm, and final, exercises could be represented as follows:

```
<!ELEMENT EXERCISE EMPTY>
<!ATTLIST EXERCISE CAT (H|M|F) #REQUIRED
                ENO CDATA #REQUIRED
                TOPIC CDATA #REQUIRED
                MAXPT CDATA #REQUIRED>
```


Special Characters

- If the XML file is generated by exporting data from a database, characters that are forbidden within attribute values must be escaped:
 - Replace “<” by “<”.
 - Replace “&” by “&”.
 - Replace an apostrophe (’) by “'”.
If this character is used as a string delimiter.
- Special national characters must be represented in UTF-8, or an XML declaration that specifies an encoding must be used.

Table Rows/Objects: Method II (1)

- An alternative is to use a nested structure with an element per attribute, plus one per row:

```
<STUDENT>  
  <SID>101</SID>  
  <FIRST>Ann</FIRST>  
  <LAST>Smith</LAST>  
  <EMAIL>smith@acm.org</EMAIL>  
</STUDENT>
```

- Advantage (?): Only elements, no attributes.
- Disadvantage: Longer.

Table Rows/Objects: Method II (2)

- The declaration in an XML DTD would look as follows:

```
<!ELEMENT STUDENT (SID, FIRST, LAST, EMAIL?)>
<!ELEMENT SID      (#PCDATA)>
<!ELEMENT FIRST    (#PCDATA)>
<!ELEMENT LAST     (#PCDATA)>
<!ELEMENT EMAIL    (#PCDATA)>
```

- In SGML, one could use “&” instead of “,” to permit an arbitrary sequence of the subelements.

In XML, one would have to simulate this with “|”. For a larger number of columns, this gives very long and complex content models.

Method I vs. Method II (2)

- Example for a mixture of both methods:

```
<STUDENT ID='S101' EMAIL='smith@acm.org'>  
  <FIRST>Ann</FIRST>  
  <LAST>Smith</LAST>  
</STUDENT>
```

- This can be declared as follows:

```
<!ELEMENT STUDENT (FIRST, LAST)>  
<!ATTLIST STUDENT ID ID #REQUIRED  
                  EMAIL CDATA #IMPLIED>  
<!ELEMENT FIRST (#PCDATA)>  
<!ELEMENT LAST (#PCDATA)>
```


Inhalt

- 1 Motivation, Example Database
- 2 Single Rows/Objects
- 3 Grouping Rows: Tables**
- 4 Relationships

Grouping Rows (1)

- One possibility is to create one element for each relation/table, e.g.

```
<?xml version='1.0' encoding='ISO-8859-1'?>
<GRADES-DB>
  <STUDENTS>
    <STUD SID='101' FIRST='Ann' .../>
    <STUD SID='102' FIRST='David' .../>
    ...
  </STUDENTS>
  ...
</GRADES-DB>
```


Grouping Rows (2)

- An alternative is to have no such containers:

```
<?xml version='1.0' encoding='ISO-8859-1'?>
<GRADES-DB>
  <STUDENT SID='101' FIRST='Ann' LAST='Smith' />
  <STUDENT SID='102' FIRST='David' LAST='Jones' />
  ...
  <EXERCISE CAT='H' ENO='1' TOPIC='ER' />
  ...
  <RESULT SID='101' CAT='H' ENO='1' POINTS='10' />
  ...
</GRADES-DB>
```

Grouping Rows (3)

- If there are no table groups, one can require that all rows of a single table are written consecutively:

```
<!ELEMENT GRADES-DB (STUDENT*,  
                      EXERCISE*,  
                      RESULT*)>  
<!ELEMENT STUDENT   EMPTY>  
...
```

- An alternative is to require no specific sequence:

```
<!ELEMENT GRADES-DB (STUDENT|EXERCISE|RESULT)*>
```

Grouping Rows (4)

- Within a table, one can group rows by an attribute:

```
<EXERCISES>
  <CAT LETTER='H'>
    <EX ENO='1' TOPIC='ER' MAXPT='10' />
    <EX ENO='2' TOPIC='SQL' MAXPT='10' />
  </CAT>
  <CAT LETTER='M'>
    <EX ENO='1' TOPIC='SQL' MAXPT='14' />
  </CAT>
</EXERCISES>
```

- “EX” does not need an attribute “CAT”: Its value can be derived from the enclosing “CAT” element.

Ordered Data (1)

- In relational databases, the rows within a table have no specific sequence.
- If the sequence is important, and cannot be recovered by ordering the rows by one of the columns, a column must be added that encodes the sequence (e.g. a number).
- XML documents are always ordered.
- Therefore it might be possible to leave out columns that can be derived from the position in the file.

Ordered Data (2)

- If e.g. the exercise number is always sequential, it does not have to be stored explicitly:

```
<EXERCISES>
  <CAT LETTER='H'>
    <EX TOPIC='ER' MAXPT='10' />
    <EX TOPIC='SQL' MAXPT='10' />
  </CAT>
  <CAT LETTER='M'>
    <EX TOPIC='SQL' MAXPT='14' />
  </CAT>
</EXERCISES>
```

Inhalt

- 1 Motivation, Example Database
- 2 Single Rows/Objects
- 3 Grouping Rows: Tables
- 4 Relationships**

1:n Relationships (3)

- In the relational model, the relationship “teaches” is implemented by adding the key of professor as a foreign key to the course table:

PROFESSORS	
<u>NAME</u>	PHONE
Brass	55-24740
Zimmermann	55-24712

COURSES		
<u>TERM</u>	<u>TITLE</u>	PROF
Summer 2004	Databases Design	Brass
Winter 2004	Foundations of the WWW	Brass
Summer 2004	Compiler Construction	Zimmermann

1:n Relationships (4)

- One-to-many relationships can be easily represented by nesting the elements for the “many” side (in this case Course) into the elements for the “one” side (Professor):
See the example on the next slide.
- This nesting can be extended to arbitrary depth to represent a tree of one-to-many relationships.
- Example: Suppose that the times when the course meets (class) has to be stored for each course (courses can meet several times per week).

1:n Relationships (5)

```
<?xml version='1.0' encoding='ISO-8859-1'?>
<COURSE-DB>
  <PROFESSOR NAME='Brass' PHONE='55-24740'>
    <COURSE TERM='Summer 2004'
      TITLE='Database Design' />
    <COURSE TERM='Winter 2004'
      TITLE='Foundations of the WWW' />
  </PROFESSOR>
  <PROFESSOR NAME='Zimmermann' PHONE='55-24712'>
    <COURSE TERM='Summer 2004'
      TITLE='Compiler Construction' />
  </PROFESSOR>
</COURSE-DB>
```

1:n Relationships (6)

```
<?xml version='1.0' encoding='ISO-8859-1'?>
<COURSE-DB>
  <PROFESSOR NAME='Brass' PHONE='55-24740'>
    <COURSE TERM='Summer 2004'
      TITLE='Database Design'>
      <CLASS DAY='MON' FROM='10' TO='12' />
      <CLASS DAY='THU' FROM='16' TO='18' />
    </COURSE>
    <COURSE TERM='Winter 2004'
      TITLE='Foundations of the WWW'>
      <CLASS DAY='WED' FROM='14' TO='16' />
    </COURSE>
  ...
```

Foreign Keys (1)

- An alternative is to represent the professor-course relationship with **ID**- and **IDREF**-attributes:

```
<!ELEMENT COURSE-DB (PROFESSOR|COURSE)*>
<!ELEMENT PROFESSOR EMPTY>
<!ATTLIST PROFESSOR NAME ID #REQUIRED
                PHONE CDATA #REQUIRED>
<!ELEMENT COURSE EMPTY>
<!ATTLIST COURSE TERM CDATA #REQUIRED
                TITLE CDATA #REQUIRED
                PROF IDREF #REQUIRED>
```

- This is very similar to the relational solution.

Foreign Keys (2)

```
<?xml version='1.0' encoding='ISO-8859-1'?>
<COURSE-DB>
  <PROFESSOR NAME='Brass' PHONE='55-24740' />
  <COURSE TERM='Summer 2004' PROF='Brass'
    TITLE='Database Design' />
  <COURSE TERM='Winter 2004' PROF='Brass'
    TITLE='Foundations of the WWW' />

  <PROFESSOR NAME='Zimmermann' PHONE='55-24712' />
  <COURSE TERM='Summer 2004' PROF='Zimmermann'
    TITLE='Compiler Construction' />
</COURSE-DB>
```

Foreign Keys (3)

- **IDREF**-attributes are similar to foreign keys, but there are the following differences:
 - **ID/IDREF**-attribute values must be identifiers.
 - E.g. “**S. Brass**” could not be used as value of an **ID**-attribute.
 - **IDREF** attributes can refer to any element that has an **ID**-attribute. One cannot specify that **PROF** in **COURSE** must point to a professor.
 - In the example, only **PROFESSOR** has an **ID**-attribute. Then this problem does not occur.
 - The relational model permits keys that consist of several attributes (not supported in DTDs).

IDREFS (1)

- XML has also the attribute data type **IDREFS**, which is a space-separated list of **IDREF** values.
- Whereas the foreign key must be placed on the “many” side of a “one-to-many” relationship, this permits to put the linking data on the “one” side.
- E.g. if the courses are identified by **ID** values, the professor element can contain an **IDREFS** attribute with the IDs of all courses that he/she teaches.

See the example on the next slide. The one-to-many relationship “One professor teaches many courses” is implemented with an **IDREFS** attribute in the professor element. In contrast, the standard foreign key solution uses an **IDREF** attribute in the course element.

IDREFS (2)

- Application of an IDREFS attribute COURSE_IDS:

```
<?xml version='1.0' encoding='ISO-8859-1'?>
<COURSE-DB>
  <PROFESSOR NAME='Brass' PHONE='55-24740'
    COURSE_IDS='DDO4 WWW04' />
  <COURSE ID='DDO4' TERM='Summer 2004'
    TITLE='Database Design' />
  <COURSE ID='WWW04' TERM='Winter 2004'
    TITLE='Foundations of the WWW' />

  <PROFESSOR NAME='Zimmermann' PHONE='55-24712'
    COURSE_IDS='CC04' />
  <COURSE ID='CC04' TERM='Summer 2004'
    TITLE='Compiler Construction' />
</COURSE-DB>
```

n:m Relationships (1)

- The student grades database contains a many-to-many (n:m) relationship:
 - One student can solve many exercises.
 - One exercise can be solved by many students.
- In this case references are unavoidable (at least if duplicate storage of the same entities is excluded):
 - Either the results are nested under students (then result elements must point to exercises),
 - or results are nested under exercises (then they must point to students).

n:m Relationships (2)

```
<?xml version='1.0' encoding='ISO-8859-1'?>
<GRADES-DB>
  <STUDENT SID='101' FIRST='Ann' LAST='Smith'
    EMAIL='smith@acm.org'>
    <RESULT CAT='H' ENO='1' POINTS='10' />
    <RESULT CAT='H' ENO='2' POINTS='8' />
    <RESULT CAT='M' ENO='3' POINTS='12' />
  </STUDENT>
  ...
  <EXERCISE CAT='H' ENO='1' TOPIC='ER'
    MAXPT='10' />
  ...
</GRADES-DB>
```

n:m Relationships (3)

```
<?xml version='1.0' encoding='ISO-8859-1'?>
<GRADES-DB>
  <STUDENT ID='S101' FIRST='Ann' LAST='Smith'
    EMAIL='smith@acm.org' />
  ...
  <EXERCISE CAT='H' ENO='1' TOPIC='ER'
    MAXPT='10'>
    <RESULT STUD='S101' POINTS='10' />
    <RESULT STUD='S102' POINTS='9' />
    <RESULT STUD='S103' POINTS='5' />
  </EXERCISE>
  ...
</GRADES-DB>
```

n:m Relationships (4)

- As is well known in databases, one can replace a many-to-many relationship by an “association entity” (**RESULTS**) and two one-to-many relationships.
- One of the relationships is represented by nesting the elements, the other relationship is represented by references.
- Given an arbitrary ER-diagram,
 - one would first replace the many-to-many relationships in this way by association entities, and then
 - cut the resulting graph of one-to-many relationships into trees.
 - References are needed for cutted edges, the trees are represented by nesting.

References

- Tim Bray, Jean Paoli, C. M. Sperberg-McQueen, Eve Maler, François Yergeau, John Cowan: Extensible Markup Language (XML) 1.1 (Second Edition), W3C Recommendation 16 August 2006, edited in place 29 September 2006. [<http://www.w3.org/TR/xml11>]. See also: [<http://www.w3.org/XML>].
- Elliotte R. Harold, W. Scott Means: XML in a Nutshell, 3rd Ed. O'Reilly, 2004, ISBN 0596007647.
- Didier Martin, Mark Birbeck, Michael Kay: Professional XML, 2nd Ed. Wrox, 2000.
- Henning Lobin: Informationsmodellierung in XML und SGML. Springer-Verlag, 1999.
- Erhard Rahm, Gottfried Vossen: Web & Datenbanken. Dpunkt Verlag, 2002.
- Meike Klettke, Holger Meyer: XML & Datenbanken. Dpunkt Verlag, 2002.
- Akmal B. Chaudhri et al.: XML Data Management. Addison-Wesley, 2003.
- Eve Maler, Jeanne El Andaloussi: Developing SGML DTDs: From Text to Model to Markup. Prentice Hall PTR, 1996.